



# CMS Shipping And Logistics

## Complete Marine Solution



*About Us – CMS Shipping And Logistics ISO Certified 9001:2008 is a leading company in ship repairing and maintenance works, technical management, supplying of ship's equipment and spare parts.*

**MISSION STATEMENT**



- 1) *Cement Discharge Bellows Inner & Outer Section manufacturer as per client specifications & sizes*
- 2) *Air Blow Tank Canvas Manufacture as per client sizes & material*
- 3) *Filter Tube Bags*



*M.V. Darya Shaan - Renewal of Port  
and Stbd Engine Room Blower  
Trunking.*

*Fabricated New M.S. Trunk as per size  
taken on board. (Flexible Hose Connection  
Joint)*



***M.V. Darya Maan –  
Renewal of Bellow Control  
Room Window***

***Removed damaged window frame,  
glass and fabricated new frames,  
toughened glass and fixed with  
rubber seal, given finish paint.***



# *M.V. Darya Shaan – Brake Liner winch Drum renewal*



***M.V. Darya Shaan – Renewal of  
BMH Mesh Room Air Vent  
Fabrication & Fitting.***

*( Plate Thickness-6mm , Sizes as per  
Measurements taken on Board)*

***CCR Mesh Room Air Vent  
Fabrication & Fitting.***

*( Plate Thickness-6mm , Sizes as per  
Measurements taken on Board)*



*M.V. Darya Shaan –  
Renewal of Brake Bank  
Winches Forward and Aft.*



***M.T. Sidra Messaied –  
Fabricated S.S. Sea Chest  
Strainer***

- 1) TOP PART HAS A COLLAR OUTER  
DIA 395MM***
- 2) STRAINER OUTER DIA IS 380MM***
- 3) mesh size - 20 mesh that's 841 micron  
or 0.841mm***
- 4) material stainless steel 316***

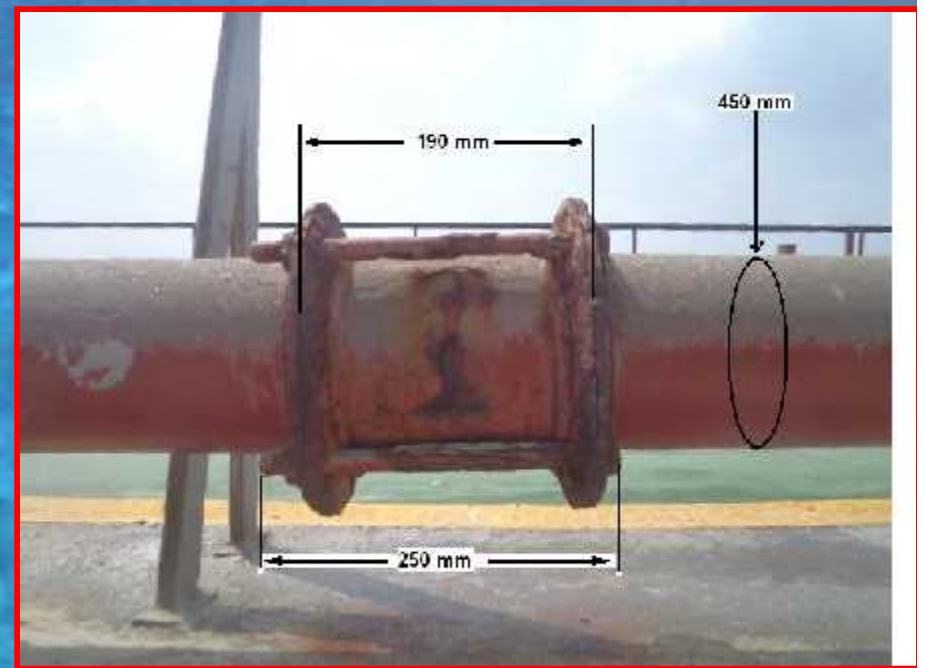




*M.T. Sidra Ras Laffan Fresh  
Water Tank Cleaning &  
Sludge removal*



*M.V. Darya Maan - Fabricated  
Expansion Joint as per  
Dimensions given by Vessel*



## ***GALLEY HOT PLATE***

*We source and represent variety of reputable brand equipment for galley equipment. We have a pool of delicate designer which are able to provide you with layout arrangement design on galley Hot Plate area.*



*Ship Repair - Manufacturing Cement Bellow for cement discharge at Port, mechanical repairs on engine, fabrication-steel repairs, electrical rewinding of motors, generators, wet docking hydro blasting, AC repairs, fully equipped machine shop, Chipping, Painting & Tank cleaning, Accommodation Doors, Bridge sliding Doors, Letter Making in Metal (Vessel Name Plate), Gangway Ladder, Hatch Covers, Manhole Covers, Bottom covers, renewal and face cut of Manifold reducers, Grating in Metal & FRP, Expansion Bellows (rubber, metal & canvas), Diesel generator Set Repairs, Fairlead & Old man Rollers, Windlass Renewal / Repair, Rudders, Stabilizers, Shafting, Under Water Jobs, Dry Dock Jobs and Etc. Engineering services in the field of repairs and maintenance of ship's automatic systems, control systems and hydraulic drivers, main engine, auxiliaries, boilers and ships machinery repairs. We can supply on short notice professional welders, repairmen, electrician, service personnel for radio and navigational equipment.*

*We provide reconditioning for major engine parts in key locations overseas and for some engine models, parts are available on exchange. Ship repair contracting is also offered worldwide. Replacement of generators, pumps, oil purifiers, compressors and other shipboard equipment, is our specialty. Many vital components can frequently be replaced with rebuilt equipment, for less than 1/2 the cost of new. New seawater pumps can often be supplied immediately from stock.*

*We at CMS Shipping And Logistics are engaged in offering quality Services to marine engines to our esteemed clients.*

### ***Over Haul Of Diesel Engine***

*We Carry out complete overhaul of Caterpillar, Cummins, Deutz, MAN, Daihatsu, Detroit Diesel and Komatsu engines.*

### ***Diesel Engine Repairing Services***

*CMS Shipping And Logistics is a well known established name in service providing sector. It provides its services in calibration, reconditioning and repairing of industrial and marine equipments. We undertake industrial repairing services all over the Maharashtra. We are highly appreciated for quality services which we provide in the market. Repairing is done by our high skilled professionals having a great experience in their relevant fields. We provide our quality service at a very reasonable cost within given constrain of time with full efficiency according to the need and requirement of our client.*

### ***Cylinder Head Repair And Services***

*Our company is engaged in repairing an extensive range of industrial cylinder head. This is hydraulically tested for cracks and the same repaired by cold weld method.*



## ***Engine Machining***

*CMS specializes in Engine Machining. At our engine-reconditioning workshop in Mumbai, you'll find specialized equipment and a highly skilled team, able to handle projects of all sizes, from small machining to large earthmoving engine jobs.*

*We ensure fast turnaround times, guarantee all of our workmanship, and provide written warranties on all fully reconditioned motors.*

*You can count on us for all your machining requirements, including:*

[\*Cylinder Heads\*](#)

[\*Cylinder Blocks\*](#)

[\*Crankshafts\*](#)

[\*Connecting Rods\*](#)

[\*Camshafts\*](#)

## **Camshafts**

*CMS expert team can assist with all your Camshaft repair requirements, from crack testing to straightening. We provide a range of services to suit a variety of camshafts from small single cylinders to large diesel models. All camshafts that come through our workshop are also inspected and checked against the Original Equipment Manufacturers (O.E.M.) specifications.*

*Our Camshaft services include:*

*Camshaft Crack Testing*

*Grinding*

*Camshaft Straightening*

*Re-Radiusing Rockers*

*Racing Cam Followers/Tappets*



## **Connecting Rods**

*CMS repairs Connecting Rods of all sizes. Whether you require small or big end resizing, Con Rod straightening or a crack test, we have the equipment and the know-how to get the job done right – first time.*

*All Con Rods that pass through our workshop are checked for straightness and size prior to the commencement of machining, and we ensure all Connecting Rod services are performed to exact tolerances in accordance with the Original Equipment Manufacturer's (O.E.M.) specifications and procedures.*

*Our Con Rod Machining services include:*

*Checking & Sizing Control*

*Resizing & Honing Small Ends*

*Resizing & Honing Big Ends*

*Crack Testing*

*Demagnetising*

*Straightening*

*Proof Testing*

*Con Rod Polishing*





## **Cylinder Heads**

*Whether you're after a simple strip and clean or a full overhaul, CMS has the machining solution to meet your needs. We service all makes and models of diesel cylinder heads and guarantee fast turnarounds.*

*Our Mumbai workshop is fully equipped with specialized gear to perform a large range of cylinder head machining and reconditioning services.*

*All cylinder heads that pass through our workshop are inspected, crack-tested and quoted prior to the commencement of any machine work.*

***Our quote process requires 39 individual check points**, from bolt holes, to injector tubes, valves, manifold studs, cylinder head thickness & hardness, and many more. All the results are then recorded on the job card and then the job is quoted.*



***Our Cylinder Head services include:***

- Strip, Clean & Quote*
- Acid Bath & Pressure Clean*
- Lectro Magna Flux, Paint & Dye Crack Testing*
- High Temperature, Full Flow Pressure Testing*
- Machining the Face & Manifold Services*
- Remove & Replace Valve Guides, K-Line & Thin Wall Guides*
- Cutting Seats & Facing Valves*
- Remove & Replace Inserts*
- Machine & Fit Oversize Inserts*
- Remove & Replace Injector Tubes*
- Remove Broken Studs*
- Thread Repairs*
- Reclaiming of Cylinder Heads*
- Re-Cut Sealing Scrolls*



## Valve Reconditioning

*We originally based our business on reconditioning. This proved to be an excellent foundation to which we have added an "Extensive in-House Library of Data Collection" and other specialized capabilities and procedures. Now, we routinely work with more exotic metals and materials found in critical valve service applications*

### **Capabilities**

*Trim changes*

*Flange conversions*

*Convert Flanged End Valves to Butt Weld End*

*Convert Raised Face Flanges to Ring Type Joint*

*Installation of special packing and gaskets*

*Mounting a full range of valve actuators, from gear operators to sophisticated motor, pneumatic, hydraulic, and electric actuators*

*Special Cleaning*

*Install By-Pass*

*Valve Testing*



## ***Marine & Industrial Pump Repair***

*We can offer you a complete pump repair service including, if necessary, removal and reinstallation. We have developed many innovative repair techniques to help avoid the need to scrap expensive equipment and replace with new.*

*Pumps overhauled by CMS are often returned with a better performance and service life than when originally fitted.*

*Repair rather than replacement also eliminates the need to alter pipe work etc to accommodate an alternative pump, which gives you a further saving in terms of time and money.*

*Our manufacturing capability means that obsolete or difficult to obtain parts can be made and indeed improved upon, using today's superior material specifications and manufacturing techniques. This offers you a complete solution to your pumping problems.*

*In addition to pump repairs, we manufacture and supply spare parts for a wide variety of pumping equipment.*



## **PUMPS & MOTORS**

*If you are tired of the cost of pump spares, long deliveries increasing down time, or obsolete parts causing you to scrap expensive equipment, let us save you time and money.*

*All parts are manufactured to a high standard using the best materials to suit your application. Computer aided design and production methods ensure correct fit and accurate tolerances at all times.*

*We can supply parts for many types of pump regardless of manufacture or country of origin, wear rings, impellers; complete rotating assemblies, pump casings and many more parts are all supplied by CMS*



*We repair or clean the following  
Heat Exchangers professionally:  
Shell & Tube coolers  
Plate coolers  
Oil-Air coolers  
We also do a  
leakage test finally.*



## *Boiler Repairs.*





# CONTACT

**CMS SHIPPING AND LOGISTICS**  
T-212, 1 OLD BARRACK, CHEMBUR COLONY, NEAR  
MADHUMATI SOAP FACTORY, CHEMBUR, MUMBAI-  
400074 Tel. Fax : +91 22 25200909  
E-Mail : [aadarshent.sales@gmail.com](mailto:aadarshent.sales@gmail.com)  
[info@cmsshippingandlogistics.com](mailto:info@cmsshippingandlogistics.com)  
Contact No  
+91 9702496695  
+91 9920207081

